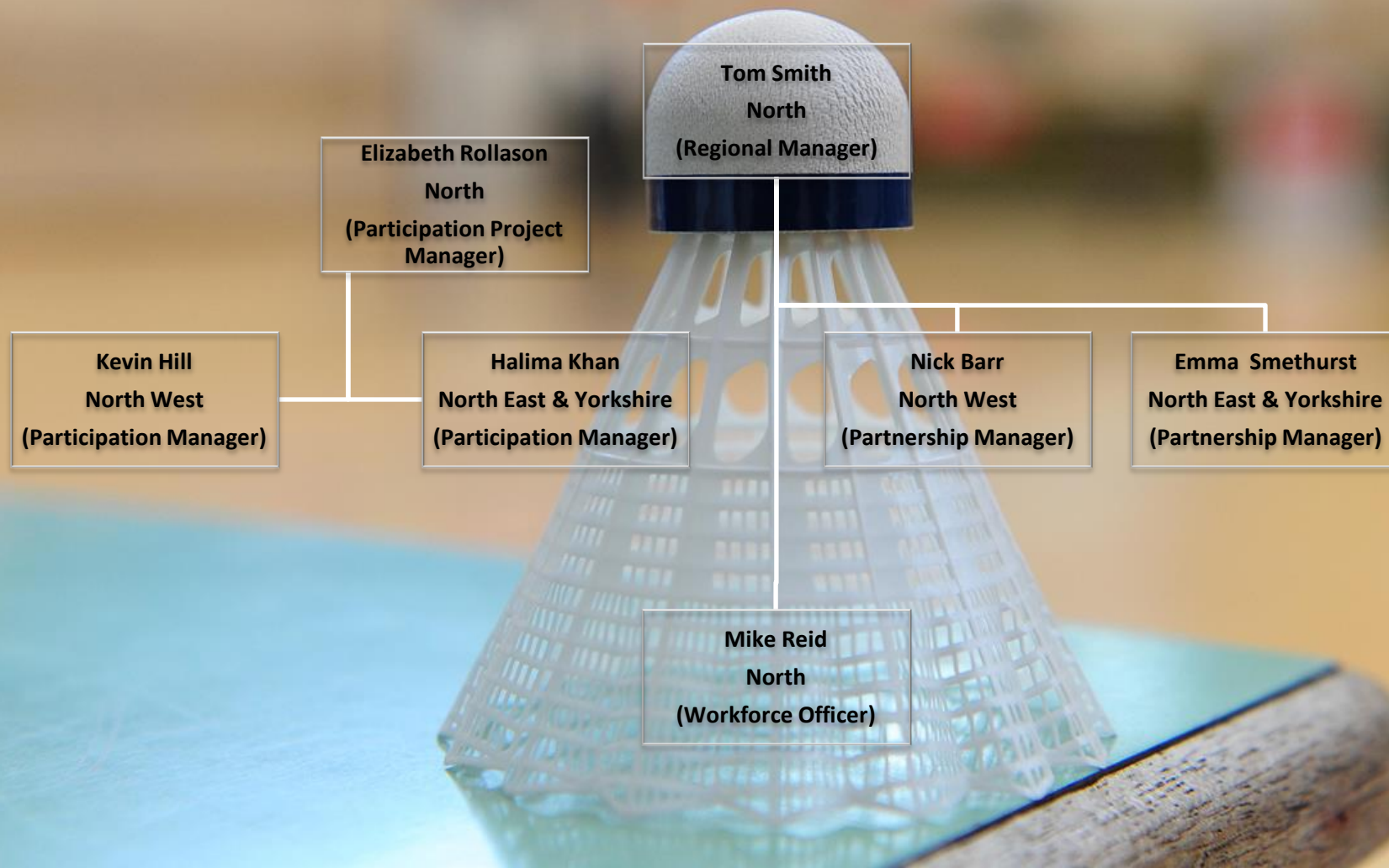


Staff Structure



**NORTH
REGION**



Staff Contact Details

BADMINTON
ENGLAND



NORTH
REGION

Regional Manager

Lead the regional team ensuring a co-ordinated and strategic approach across the region
Lead relationships at senior level with County Sports Partnerships, Local Authorities, Sport England
Lead relationships at senior level with County Badminton Associations
Translating national strategy for regional and local delivery

tomsmith@badmintonengland.co.uk

Participation Project Manager

Supporting the implementation of the Framework to achieve increased participation
Contributing to the ongoing development of the Framework
Line Management of Participation Managers
Strategic lead for North of England 26+ strategy

elizabethrollason@badmintonengland.co.uk

Partnerships Managers

Manage investment into CBNs and PCs and work with them to ensure effectiveness and sustainability
Identify & establish effective relationships with local partners who can assist delivery of badminton
Work with the Facilities Investment Manager to ensure that suitable facilities are available
Ensure effective delivery of National Schools Championships

emmasmethurst@badmintonengland.co.uk

nickbarr@badmintonengland.co.uk

Participation Managers

Promoting and selling the Play Badminton Framework to leisure centres
Supporting the implementation of the Framework to achieve increased participation
Contributing to the ongoing development of the Framework

halimakhan@badmintengland.co.uk

kevinhill@badmintonengland.co.uk

Workforce Officers

Co-ordinate regional coach education/CPD programme to underpin programme delivery
Support deployment of deliverers for Smash UP! No Strings Badminton/other relevant programmes
Co-ordination and quality assurance of core programmes at regional level
Address regional workforce needs as directed by the Regional Manager
Liaison with coach dev. & professional education partners to ensure the best support

mikereid@badmintonengland.co.uk

